



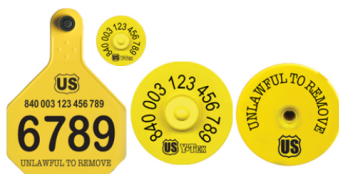
# CATTLE OFFICIAL ID OPTIONS

## OFFICIAL IDENTIFICATION

- Device or ID mark approved by USDA which provides a unique ID number for the individual animal
- Official ID devices must be tamper evident and bear the official U.S. shield
- **It is unlawful to remove official ID**



## ANIMAL ID NUMBER (AIN, 840) TAGS



- Tags begin with the official country code (840 for USA), followed by 12 digits
- These can be Radio Frequency Identification (RFID) devices or visual only
- AIN tags are issued to accredited vets by the OSV
- Producers can purchase tags from an authorized tag manufacturer or an accredited veterinarian who is qualified as a Tag Manager
- A National Premises ID Number (PIN) is required

## HOW TO OBTAIN A NATIONAL PIN

- A National Premises ID Number (NPIN) is required to buy 840 tags or devices
- For questions about how to obtain a NPIN, contact the KY Office of the State Veterinarian (OSV)
- Visit [kyagr/statevet/animal-movement.html](http://kyagr/statevet/animal-movement.html) for more information about official animal ID

## WHITE 840 RFID TAGS



- White RFID AIN tags can be ordered from the OSV by an accredited vet or by a producer to use on cattle
- Tags begin with official country code (840 for USA), followed by 12 digits

## BRUCELLOSIS VACCINATION TAGS (FEMALES ONLY)



- Orange RFID AIN tags are only provided by the OSV to accredited vets for application at the time of brucellosis vaccination of heifers
- Tags begin with official country code (840 for USA), followed by 12 digits

## USDA APPROVED 840 TAG MANUFACTURERS

### ALLFLEX USA, INC.

- 📞 800-989-8247
- 🌐 [www.AllflexUSA.com](http://www.AllflexUSA.com)

### NATIONAL BAND & TAG COMPANY

- 📞 859-261-2035
- 🌐 [www.nationalband.com](http://www.nationalband.com)