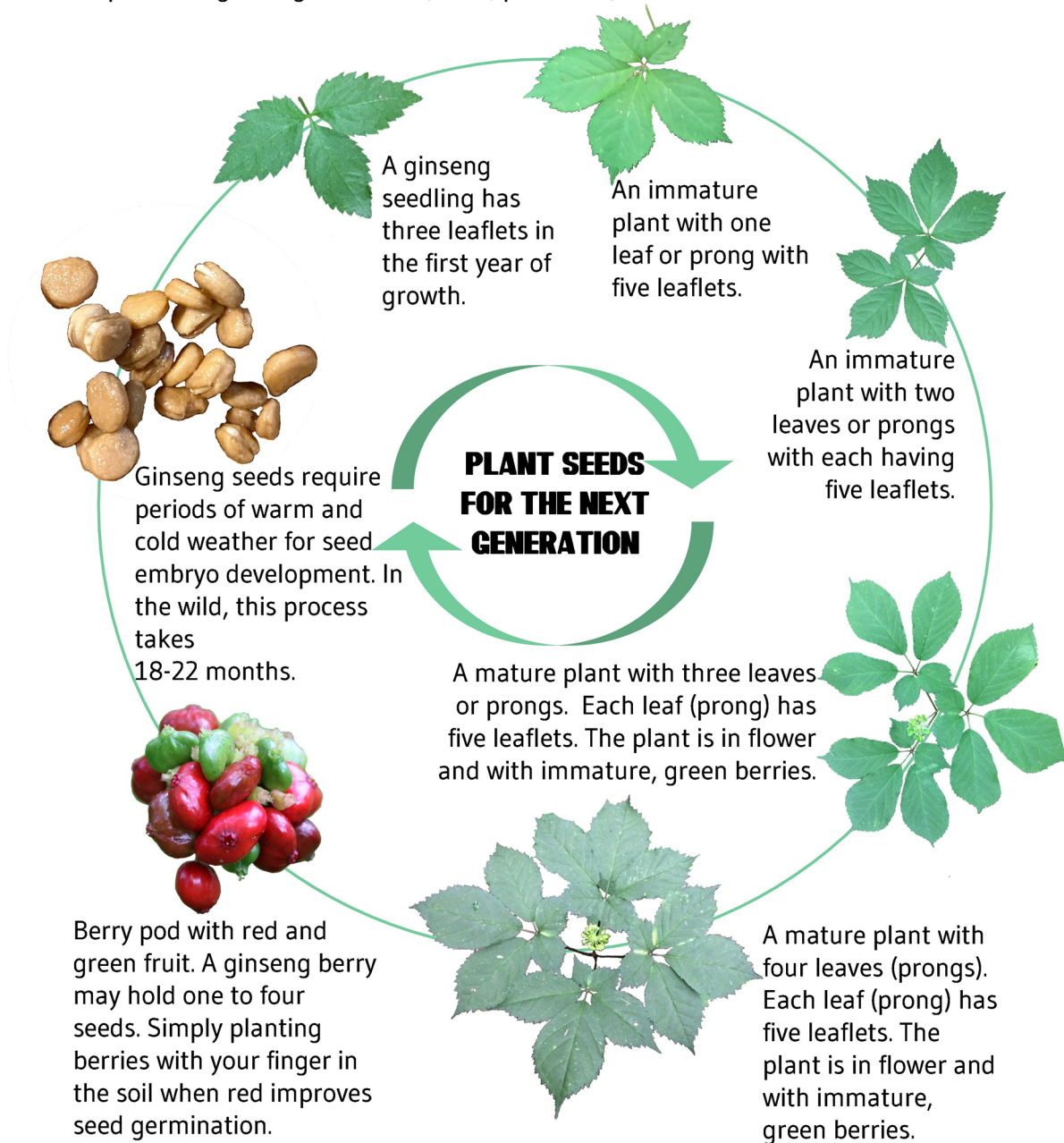


GINSENG

LIFE CYCLE

Ginseng growth takes place over many years, especially in the wild. Optimistically, a mature berry can go from a seed to mature plant in seven to ten years. Realistically, this process to maturity takes 10 to 17 years. The growth speed depends on growing conditions, soils, predation, and habitat.



KENTUCKY
DEPARTMENT OF
AGRICULTURE

Plant photos by A.M. Lucio, Kentucky Department of Agriculture. Seed photo provided by Marcus Stidham.