

KENTUCKY LIVESTOCK AND GRAIN MARKET REPORT

Volume No. 28 Issue No.48 Released: 12/12/2014

Kentucky Department of Agriculture
Market News Branch
111 Corporate Drive
Frankfort, KY 40601
Telephone No.: (502) 573-0282
www.kyagr.com
Hearing impaired: Temporarily not available
Daily Farm Market News is on the internet at www.crownerfarmnews.net



James R Comer, Commissioner
Warren Beeler, Editor
John Chism, Market News

www.ams.usda.gov/marketnews.htm
Farmplot: (800) 327-6568 in Kentucky
Farmplot: (502) 573-0553 out of state

Mammoth Cave Dairy Auction, Smith Grove, KY 12/09/2014 Receipts: 676 Holsteins unless otherwise stated

Springers: (2-3 years old, 5-8 months bred) Supreme 1300-1600 lbs 1850.00-2975.00. Approved 1200-1400 lbs 1500.00-1750.00. Medium 950-1200 lbs 1275.00-1450.00. Common 800-1100 lbs 1000.00-1175.00.

Fresh Milking Cows: (2-4 years old) Supreme 1300-1600 lbs 2300.00-2675.00. Approved 1200-1400 lbs 1650.00-1875.00. Medium 950-1200 lbs 1300.00-1425.00. Common 800-1100 lbs 1150.00-1225.00.

Short Bred: (2-3 years old, 1-4 months bred) Supreme 1300-1600 lbs no test. Approved 1200-1400 lbs 1500.00-1600.00. Medium 950-1200 lbs 1300.00-1475.00. Common 800-1100 lbs no test.

Open Heifers: Supreme 150-225 lbs 425.00-435.00; 500-600 lbs 1010.00-1100.00. Approved 150-225 lbs 275.00; 600-700 lbs 1100.00. Medium no test. Common no test.

Holstein Heifer Calves: (per head) Small 120.00-190.00. Medium and Large 260.00-335.00.

Holstein Bull Calves: (per head) Small 90.00-210.00. Medium and Large 230.00-370.00. Few at 400.00-440.00 per head.

KENTUCKY GRAIN PRICES

LOUISVILLE AREA: Louisville & Bagdad; PENNYRILE AREA: Allensville, Auburn, Franklin, Hopkinsville & Pembroke;
BLUEGRASS AREA: Bardstown, Lexington & Winchester; GREEN RIVER: Caneyville & Livermore;
NORTHERN KENTUCKY AREA: Silver Grove at Cincinnati; PURCHASE AREA: Clinton & Mayfield.
 Opening bids at elevators and processing plants.

Eastern Cornbelt Ethanol Plant Report
12/11/2014
Indiana Ohio Illinois

Yellow Corn Spot Bid 3.66-4.14

Dried Distillers Grain (\$/ton)
 10% moisture 125.00-160.00

Modified Wet Distillers (\$/ton)
 50-55% moisture 50.00

| 12/11/14 4:00 pm est Bids for next day Cash Bids | Louisville | Pennyrile | Purchase | Bluegrass | Green River | Northern KY |
|--------------------------------------------------------|-------------|-------------|-------------|------------|-------------|-------------|
| Corn #2 Yellow | 3.68-3.83 | 3.79-3.86 | 3.89-3.91 | 3.26-3.69 | 3.96-3.98 | 3.81 |
| Corn #2 White | | NA | | | | |
| Soybeans #1 Y | 10.06-10.50 | 10.42 | 10.57-10.60 | 9.82-10.27 | 10.52 | 10.61 |
| Wheat #2 SRW | 5.36-5.81 | 5.68-5.83 | NA | NA | NA | 5.88 |
| Barley | | | | | | |
| New Crop Delivery Contract | | | | | | |
| Corn #2 Yellow | 3.74 | 3.86-3.99 | 3.89-3.99 | 3.74 | 3.99 | 3.87 |
| Corn #2 White | | 4.39 | | | | |
| Soybeans #1 Y | 10.53 | 10.45-10.52 | 10.60 | 10.27 | 10.57 | 10.65 |
| Wheat #2 SRW | 5.81 | 5.83-5.98 | 5.55 | NA | NA | NA |
| Barley | | | | | | |

Kentucky Weekly Cattle Receipts:

| | |
|----------|--------|
| 11/20/14 | 21,089 |
| 12/04/14 | 29,076 |
| 12/11/14 | 27,969 |

| Weekly Feed Ingredient Price Wholesale prices, \$ per ton Rail or Truck FOB Location | Owensboro Grain 12/12/2014 | Commonwealth Agri-Energy Hopkinsville 12/12/2014 | St. Louis Weekly Feed Prices 12/09/2014 | Memphis Weekly Feed Report 12/09/14 | Corn Belt Feedstuffs Report 12/09/14 |
|--------------------------------------------------------------------------------------------|-------------------------------|-----------------------------------------------------|--------------------------------------------|----------------------------------------|-----------------------------------------|
| Soybean Meal 48% Sol | 471.10 | — | 460.00-487.00 | 466.50-481.50 | 425.30-436.30 |
| Soybean Hulls | — | — | — | 160.00 | — |
| Corn Distillers Grain Dried | — | 165.00 | 130.00-160.00 | — | 120.00-150.00 |
| Distillers Grain Modified | — | 97.00 | — | — | — |
| Distillers Grain Wet | — | 61.00 | — | — | — |
| Corn Condensed Solubles | — | 77.00 | — | — | — |
| Corn Gluten Feed 20-21 pct | — | — | 170.00-188.00 | — | 130.00-175.00 |
| Corn Gluten Meal 60 pct | — | — | 640.00-650.00 | 700.00 | 618.38 |
| Cottonseed Meal 41 pct | — | — | — | 335.00-350.00 | — |
| Whole Cottonseed | — | — | — | 250.00 | — |
| Wheat Middlings | — | — | 120.00-127.00 | — | — |

Eastern Cornbelt Hog Prices
12/11/2014

Barrows & Gilts
 Receipts:9,289
 Base Price: \$77.00
 -\$85.50
 Wt. Avg. \$83.66

Compared to prior day, wt. avg. prices were unchanged to 2.00 lower, mostly steady to 1.00 lower. Slow market activity with light demand.

Weekly Kentucky Cattle and Grain Summary

USDA Livestock, Poultry and Grain Market News

Frankfort, KY

Friday, December 12, 2014

For Week Ending:

12/11/2014

Receipts: 27,969

Last Week: 29,076

Last Year: 22,692

[SV_LS145](#)

Compared to last week, Steer and Heifer Calves below 600 lbs sold mostly 2.00 to 5.00 higher with some 400-600 lbs offerings up to 10.00 higher. Quality was good and demand very good. Calves above 600 lbs sold steady to weak with good demand. Yearling Steers and Heifers were weak with limited comparisons available. Quality was average to good. Slaughter Cows sold steady to 2.00 lower with good demand and Slaughter Bulls 2.00 to 3.00 [More...](#)

[SV_LS145](#)

STATE AVERAGES

| Steers (M&L 1-2) | This Week | Prior Week | Last Year |
|-------------------|-----------|------------|-----------|
| 350-400 lbs | 314.44 | 315.27 | 190.60 |
| 400-450 lbs | 292.92 | 296.62 | 181.55 |
| 450-500 lbs | 281.42 | 277.53 | 176.44 |
| 500-550 lbs | 268.87 | 267.69 | 168.76 |
| 550-600 lbs | 254.72 | 253.57 | 161.57 |
| 600-650 lbs | 237.01 | 238.87 | 161.08 |
| 650-700 lbs | 233.14 | 235.19 | 154.10 |
| 700-750 lbs | 220.85 | 226.64 | 158.01 |
| 750-800 lbs | 221.93 | 227.59 | 152.79 |
| 800-850 lbs | 215.96 | 221.17 | 154.57 |
| 850-900 lbs | 211.22 | 219.93 | 155.26 |
| Heifers (M&L 1-2) | | | |
| 300-350 lbs | 276.80 | 275.53 | 153.63 |
| 350-400 lbs | 272.01 | 272.86 | 156.59 |
| 400-450 lbs | 256.53 | 258.81 | 156.06 |
| 450-500 lbs | 248.51 | 247.44 | 155.27 |
| 500-550 lbs | 236.67 | 237.77 | 150.52 |
| 550-600 lbs | 227.66 | 230.29 | 148.69 |
| 600-650 lbs | 220.20 | 222.67 | 146.62 |
| 650-700 lbs | 218.80 | 216.77 | 139.13 |
| 700-750 lbs | 208.50 | 217.03 | 151.52 |
| 750-800 lbs | 197.78 | 198.87 | 136.66 |

[SV_LS145](#)

WEEKLY COW SUMMARY

| Slaughter Cows | Average | High | Low |
|-----------------|---------------|---------------|---------------|
| Breakers | 102.50-108.50 | 110.50-116.00 | 97.00-100.50 |
| Boners | 102.00-107.50 | 113.00-118.00 | 95.00-99.50 |
| Lean | 94.50-100.50 | 106.50-110.00 | 85.00-90.50 |
| Slaughter Bulls | Average | High | Low |
| Yield Grade 1&2 | 122.00-127.50 | 133.00-136.00 | 112.50-116.50 |

[SV_LS551](#)

Dec 11, 2014

Bowling Green

SLAUGHTER GOATS: 342

Kids: Selection 2: 30-45 lbs 230.00; 45-60 lbs 245.00; 60-80 lbs 222.50; 80-100 lbs wethers 227.50. **Selection 3** 30-45 lbs 210.00; 45-60 lbs 217.50; 60-80 lbs 200.00.

SHEEP: 313

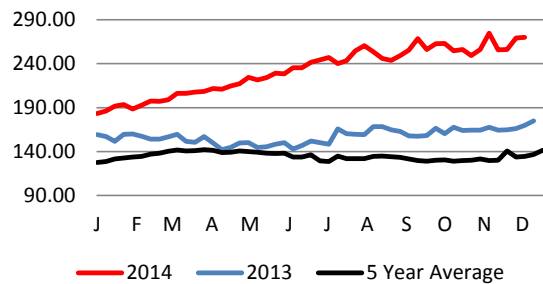
Slaughter Lambs: Hair Prime and Choice YG 2-3 45-60 lbs 265.00-267.50; 60-80 lbs 202.50-212.50; 80-100 lbs 152.50. **Wool Lambs Prime and Choice YG 2-3** 55-65 lbs 220.00; 75-85 lbs 212.50, 95-105 lbs 162.50.

Slaughter Ewes: Hair Choice and Good YG 2-3 90-115 lbs 105.00

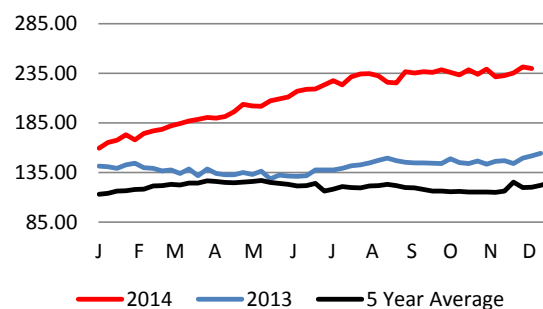
[SV_GR110](#)

| GRAINS | This Week | Prior Week | Last Year |
|------------------|------------|------------|-------------|
| Corn | 3.12-4.10 | 3.02-4.05 | 3.51-4.60 |
| Soybeans | 9.72-10.89 | 9.34-10.52 | 12.60-14.00 |
| Red Winter Wheat | 5.26-5.93 | 5.38-6.07 | 5.53-6.95 |

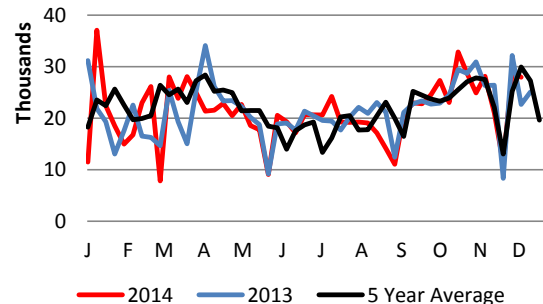
WEEKLY 400-600 LB FEEDER STEER M&L 1-2 WEIGHTED AVERAGE PRICE (\$/CWT)



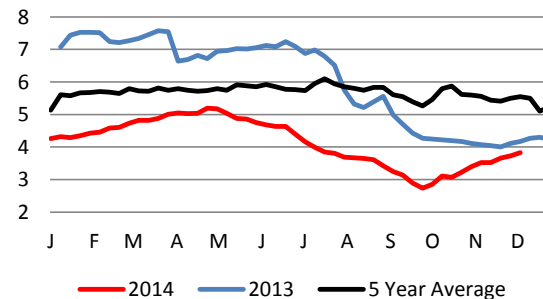
WEEKLY 400-600 LB FEEDER HEIFER M&L 1-2 WEIGHTED AVERAGE PRICE (\$/CWT)



WEEKLY KENTUCKY CATTLE AUCTION RECEIPTS



WEEKLY KENTUCKY CORN BID AVERAGE PRICE (\$/CWT)



USDA-KY Livestock, Poultry & Grain Market News
 Frankfort, KY
 Phone: 502-782-4138
 Email: kevin.bowling@ams.usda.gov
[Market News Homepage](#)

| | | | |
|----------------------------------------------------------------------------------------------------------------------------------------------------------------------------------------------------------------------------------------------------------------------------------------------------------------------------------------------------------------------------------------------------------------------------------------------------------------------------------------------------------------------------------------------------------------------------------------------------------------------------------------------------------------------------------------------------------------------------------------------------------------------------------------------------------------------------------------------------------------------------------------------------|----------------------------------------------------------------------------------------------------------------------------------------------------------------------------------------------------------------------------------------------------------------------------------------------------------------------------------------------------------------------------------------------------------------------------------------------------------------------------------------------------------------------------------------------------------------------------------------------------------------------------------------------------------------------------|----------------------------------------------------------------------------------------------------------------------------------------------------------------------------------------------------------------------------------------------------------------------------------------------------------------------------------------------------------------------------------------------------------------------------------------------------------------------------------------------------------------------------------------------------------------------------------------------------------------------------------------------------------------------------------------------------------------------------------------|----------------------------------------------------------------------------------------------------------------------------------------------------------------------------------------------------------------------------------------------------------------------------------------------------------------------------------------------------------------------------------------------------------------------------------------------------------------------------------------------------------------------------------------------------------------------------------------------------------|
| <p>Blue Grass Stockyard Lexington, KY Dec.8 & 9, 2014 Feeder Steers: Medium & Large 1 74 hd. 509# 286.75 mixed 20 hd. 698# 220.00 blk 21 hd. 724# 230.00 blk 22 hd. 729# 230.00 blk 72 hd. 777# 230.30 blk-charx 25 hd. 790# 228.00 blk-smokes 50 hd. 795# 232.50 blk 45 hd. 802# 229.25 blk 58 hd. 815# 228.60 blk 59 hd. 815# 226.75 blk-red 62 hd. 902# 221.75 bbwf 56 hd. 910# 217.25 blk-charx Medium & Large1-2 31 hd. 826# 222.50 mixed Holstein Steers: Large 3 40 hd.1258#131.00 Feeder Heifers: Medium & Large 1 23 hd. 493# 236.00 blk 44 hd. 612# 222.00 blk 68 hd. 645# 227.00 bbwf 27 hd. 670# 222.00 blk-charx 71 hd. 697# 221.00 bbwf 60 hd. 730# 221.00 blk-smokes 40 hd. 742# 220.00 bbwf 50 hd. 757# 220.75 blk</p> | <p>Blue Grass South Stanford, KY Dec.8 & 11, 2014 Feeder Steers: Medium & Large 1-2 78 hd. 670# 226.25 blk-charx 59 hd. 679# 233.00 blk-charx 75 hd. 685# 242.75 blk 66 hd. 787# 225.00 blk 59 hd. 840# 212.25 mixed 57 hd. 874# 211.75 blk-charx 59 hd. 879# 212.75 blk-charx 59 hd. 883# 216.00 blk-red 58 hd. 897# 212.50 blk-charx Holstein Steers: Large 3 20 hd. 581# 196.00 83 hd. 700# 185.50 72 hd. 779# 174.40 Feeder Heifers: Medium & Large 1-2 81 hd. 634# 215.00 mixed 40 hd. 685# 215.25 blk-gharx 79 hd. 690# 218.00 blk-charx</p> | <p>Farmers Livestock Glasgow, KY Dec.8, 2014 Feeder Steers: Medium & Large 1-2 24 hd. 515# 271.00 blk 38 hd. 580# 258.50 mixed 21 hd. 591# 245.00 blk 23 hd. 657# 229.00 blk 57 hd. 822# 218.25 mixed 24 hd. 890# 207.25 mixed Feeder Heifers: Medium & Large 1-2 42 hd. 440# 253.50 blk 34 hd. 455# 248.00 mixed 67 hd. 507# 234.25 blk 25 hd. 542# 222.00 mixed 45 hd. 573# 223.50 blk Feeder Bulls: Medium & Large 1-2 23 hd. 369# 321.00 blk 38 hd. 441# 278.00 blk 26 hd. 459# 268.00 mixed 47 hd. 520# 260.50 blk 22 hd. 549# 232.00 mixed 44 hd. 588# 236.00 blk 27 hd. 660# 215.50 blk</p> | <p>Paris Stockyards Paris, KY Dec.11, 2014 Feeder Steers: Medium & Large 1-2 20 hd. 591# 256.50 blk 78 hd. 614# 250.10 blk 21 hd. 762# 223.50 mixed 79 hd. 789# 219.50 blk 115 hd. 808# 216.40 mixed 60 hd. 915# 203.00 mixed Holstein Steers: Large 3 124 hd. 706# 178.25 28 hd. 821# 168.75 Feeder Heifers: Medium & Large 1-2 88 hd. 620# 222.25 mixed 72 hd. 667# 222.50 charx 57 hd. 678# 222.50 mixed 141 hd. 680# 222.00 mixed 140 hd. 682# 219.50 blk 44 hd. 761# 210.00 blk</p> |
| <p>Blue Grass East Mt. Sterling, KY Dec.10, 2014 Feeder Steers: Medium & Large 1 50 hd. 815# 222.00 blk-charx Feeder Heifers: Medium & Large1-2 72 hd. 757# 214.00 mixed</p> | <p>United Producers Bowling Green Bowling Green, KY Dec.9, 2014 Feeder Steers: Medium & Large 1-2 40 hd. 816# 218.55 blk Feeder Bulls: Medium & Large 1-2 24 hd. 441# 285.25 blk 26 hd. 519# 254.50 blk 20 hd. 592# 226.50 blk Feeder Heifers: Medium & Large 1-2 20 hd. 429# 257.00 blk 22 hd. 510# 242.50 blk 27 hd. 595# 224.75 blk</p> | <p>Kentuckiana Livestock Market Owensboro, KY. Dec.8, 2014 Feeder Steers: Medium & Large 1-2 31 hd. 565# 254.00 blk-red 57 hd. 683# 243.00 blk-charx 26 hd. 688# 227.00 blk-charx Feeder Bulls: Medium & Large 1-2 27 hd. 659# 222.00 blk 20 hd. 737# 196.75 blk-charx Feeder Heifers: Medium & Large 1-2 38 hd. 445# 257.00 blk 31 hd. 523# 240.00 blk 22 hd. 586# 229.00 blk</p> | <p>Mid-KY Livestock Market Upton, KY Dec.9, 2014 Feeder Steers: Medium & Large 1-2 20 hd. 460# 284.50 mixed Feeder Heifers: Medium & Large 1-2 22 hd. 366# 285.50 blk 21 hd. 417# 264.75 blk 22 hd. 620# 212.50 blk Feeder Bulls: Medium & Large 1-2 20 hd. 408# 294.50 blk 21 hd. 618# 225.50 blk</p> |
| <p>Blue Grass of Richmond Richmond, KY Dec.5, 2014 Feeder Steers: Medium & Large 1-2 92 hd. 581# 287.00 blk-charx 62 hd. 819# 225.50 blk-charx 62 hd. 830# 223.00 mixed 59 hd. 870# 223.25 blk 60 hd. 883# 224.00 blk-charx-red 95 hd. 907# 211.10 blk-charx-red 60 hd. 912# 217.50 mixed 62 hd. 917# 219.20 blk-charx 105 hd. 1019#207.50 blk-charx Feeder Heifers: Medium & Large 1-2 80 hd. 628# 230.75 mixed 22 hd. 814# 205.00 blk</p> | <p>Blue Grass of Albany Albany, KY Dec.10, 2014 Feeder Steers: Medium & Large 1-2 21 hd. 838# 200.00 blk Video Receipts: 72 hd. 740# 213.00 blk heifers 55 hd. 935# 215.75 blk steers</p> | <p>Cattlemen's Livestock Bowling Green, KY Dec. 8, 2014 Feeder Steers: Medium & Large 1-2 20 hd. 621# 227.50 blk Holstein Steers: Large 3 64 hd. 800# 168.35 59 hd. 862# 164.84 Feeder Bulls: Medium & Large 1-2 20 hd. 401# 318.00 blk 20 hd. 461# 278.00 blk 20 hd. 514# 256.00 blk Feeder Heifers: Medium & Large 1-2 28 hd. 448# 255.50 blk 20 hd. 451# 255.50 blk 34 hd. 517# 240.00 blk 31 hd. 525# 244.50 blk 20 hd. 574# 220.50 blk 30 hd. 585# 225.00 blk</p> | <p>KY-TN Livestock Auction Guthrie, KY Dec.11, 2014 Feeder Steers: Medium & Large 1-2 38 hd. 551# 248.50 bbwf 30 hd. 632# 228.50 bbwf Feeder Heifers: Medium & Large 1-2 32 hd. 456# 251.00 bbwf 20 hd. 504# 235.00 bbwf 22 hd. 545# 221.25 mixed 41 hd. 551# 230.75 bbwf 23 hd. 624# 210.00 bbwf Feeder Bulls: Medium & Large 1-2 34 hd. 445# 285.00 bbwf 34 hd. 542# 241.00 bbwf 24 hd. 631# 223.00 blk</p> |
| <p>Lake Cumberland Livestock Somerset, KY Dec.6, 2014 Feeder Heifers: Medium & Large 1-2 69 hd. 663# 223.75 blk-charx 72 hd. 712# 220.00 blk</p> | <p>Christian Co. Livestock Auction Hopkinsville, KY Dec.10, 2014 Feeder Heifers: Medium & Large 1-2 20 hd. 523# 238.00 blk 25 hd. 540# 239.25 blk 87 hd. 573# 241.50 bbwf 81 hd. 614# 226.75 mixed 70 hd. 734# 209.75 blk</p> <p>United Producers Owenton Owenton, KY Dec.10, 2014 Feeder Steers: Medium & Large 1-2 64 hd. 824# 217.20 blk Feeder Heifers: Medium & Large 1-2 20 hd. 582# 219.00 blk</p> | <p>Washington Co. Livestock Springfield, KY Dec.8, 2014 Feeder Steers: Medium & Large 1-2 38 hd. 695# 231.70 mixed Holstein Steers: Large 3 24 hd. 741# 171.60 59 hd. 872# 173.30 Feeder Heifers: Medium & Large 1-2 80 hd. 622# 234.00</p> | <p>Blue Grass of Campbellsville Campbellsville, KY Dec.10, 2014 Holstein Steers: Large 3 58 hd. 632# 192.50</p> |

Producers Livestock Auction Co, San Angelo, Texas Dec.10, 2014; Compared to last week slaughter lambs steady. Slaughter ewes steady. Feeder lambs under 80 lbs weak to 10.00 lower, over 80 lbs 10.00-20.00 lower. Nannies weak; kids 10.00-30.00 lower. Trading fairly active, demand moderate.

[Click Here to see the full report.](#)

New Holland Sales Stables - New Holland, PA Dec.8, 2014;Compared to last week, Slaughter Lambs sold mostly steady to 10.00 higher. Slaughter Ewes sold mostly firm. Demand was good. Slaughter Kids sold mostly steady to 20.00 higher. Slaughter Nannies sold mostly steady. Demand was moderate.

[Click here to see the full report](#)

Russell County Stockyards
Russell Springs, KY
Dec.10, 2014
Feeder Steers: Medium & Large 1-2
22 hd. 485# 318.50 blk
20 hd. 558# 282.75 blk
22 hd. 647# 243.25 blk-charx
Feeder Heifers: Medium & Large 1-2
32 hd. 472# 256.25 mixed
63 hd. 576# 230.75 mixed
74 hd. 668# 222.10 mixed
25 hd. 767# 211.75 blk

Special Sale Results

| | | | |
|------------------------------------------------------------------------------------------------------------------------------------------------------------------------------------------------------------------------------------------------------------------------------------------------------------------------------------------------------------------------------------------------------------------------------------------------------------|---------------------------------------------------------------------------------------------------------------------------------------------------------------------------------------------------------------------------------------------------------------------------------------------------------------------------------------------------------------------------------------------------------------------|----------------------------------------------------------------------------------------------------------------------------------------------------------------------------------------------------------------------------------------------------------------------------------------------------------------------------------------------------------------------------------------------------------------------------------------------------------------------------------------------------------------------------------|--------------------------------------------------------------------------------------------------------------------------------------------------------------------------------------------------------------------------------------------------------------------------------------------------------------------------------------------------------------------------------------------------------------------------------------------------------------------------------------------------------------------------------------------------------------------------------------------------------------------------------------------------------------------------------------------------------------------------------------------------|
| <p>Green River CPH Sale Owensboro, Ky. Dec.4, 2014 Feeder Steers: Medium & Large 1-2 43 hd. 554# 265.00 blk 113 hd. 645# 248.00 blk 71 hd. 702# 240.25blk 161 hd. 753# 231.00 blk 26 hd. 761# 224.00 mixed 62 hd. 772# 233.00 blk 80 hd. 832# 220.50 blk Feeder Heifers: Medium & Large 1-2 35 hd. 553# 246.75 blk 100 hd. 646# 230.50 blk 90 hd. 737# 219.00 blk</p> | <p>Paris CPH Sale Paris, Ky. Dec.2, 2014 Feeder Steer: Medium & Large 1-2 23 hd. 512# 288.00 blk 60 hd. 605# 264.10 blk 127 hd. 696# 245.25 blk 23 hd. 712# 242.50 smoke 92 hd. 794# 228.00 blk 19 hd. 886# 226.50 blk Feeder Heifers: Medium & Large 1-2 45 hd. 516# 250.50 blk 96 hd. 597# 242.00 blk 79 hd. 702# 222.75 blk</p> | <p>Bluegrass Richmond CPH Sale Richmond, Ky. Dec.9, 2014 Feeder Steers: Medium & Large 1-2 20 hd. 565# 292.00 blk 54 hd. 627# 260.00 blk 63 hd. 701# 237.00 blk 78 hd. 806# 219.50 blk 32 hd. 888# 210.00 blk-char Feeder Heifers: Medium & Large1-2 40 hd. 571# 235.50 blk 36 hd. 624# 231.25 blk 74 hd. 693# 220.00 blk 23 hd. 778# 200.00 blk</p> | <p>KY-TN CPH Sale Guthrie, Ky. Dec.1, 2014 Feeder Steers: Medium & Large 1-2 27 hd. 552# 262.00 blk-bbwf 63 hd. 631# 250.00 blk-bbwf 24 hd. 666# 244.00 charx-red 75 hd. 680# 243.00 blk-bbwf 70 hd. 730# 236.50 blk-bbwf 20 hd. 732# 232.00 charx-red 27 hd. 781# 231.75 blk-bbwf 67 hd. 750# 233.50 mixed 63 hd. 798# 229.50 blk 58 hd. 759# 231.00 mixed 52 hd. 837# 223.75 blk 28 hd. 833# 220.25 charx-red Feeder Heifers: Medium & Large 1-2 53 hd. 553# 240.50 blk-bbwf 84 hd. 624# 233.00 blk 22 hd. 659# 228.00 blk-bbwf 31 hd. 659# 225.00 charx-red 50 hd. 746# 219.00 blk-bbwf 22 hd. 743# 217.00 charx-red</p> |
| | <p>Hereford Influence Feeder Sale Stanford, Ky. Dec.4, 2014 Feeder Steers: Medium & Large 1-2 45 hd. 493# 272.00 59 hd. 595# 266.00 92 hd. 693# 251.25 51 hd. 779# 227.00 26 hd. 888# 216.00 Feeder Heifers: Medium & Large 1-2 25 hd. 498# 243.00 22 hd. 608# 243.00 28 hd. 671# 234.00</p> | <p>Blue Grass Stockyard Lexington, KY Dec.10, 2014 Feeder Steers: Medium & Large 1-2 34 hd. 553# 285.00 blk 103 hd. 617# 240.00 blk 146 hd. 683# 235.00 blk 21 hd. 702# 236.00 smokes 162 hd. 768# 226.00 blk 31 hd. 772# 228.00 smokes 82 hd. 871# 211.50 blk-smokes-mix Feeder Heifers: Medium & Large 1-2 29 hd. 476# 251.00 blk 52 hd. 543# 242.00 blk 93 hd. 617# 228.00 blk 69 hd. 683# 222.00 blk 33 hd. 766# 212.50 blk</p> | |

East Kentucky Replacement Bred Heifer Sale: Lee City 9/20/14– 97 heifers avg. \$2553.00

Central Kentucky “Top of the Crop” Heifer Sale: Richmond 10/21/14– 87 heifers avg. \$2661.00

Gateway Regional Bred Heifer Sale: Mt. Sterling 10/27/14– 172 heifers avg. \$2525.00

Central Kentucky Premier Heifer Sale: Lebanon 11/1/14– 196 heifers avg. \$2609.00

Bourbon Co. Elite Heifer Sale: Paris 11/3/14– 374 heifers avg. \$2616.00

Herd Builder Bred & Open Heifer Sale: Maysville 11/8/14– 161 heifers avg. \$2473.00

West Kentucky Select Bred Heifer Sale: Guthrie 11/22/14– 186 heifers avg. \$2836.00

Green River “Best of the Best” Bred Heifer Sale: Owensboro 11/22/14– 82 heifers avg. \$2662.00

Blue Ribbon Heifer Sale: Lexington 12/4/14– 337 heifers avg. \$2681.00

| USDA ESTIMATED DAILY LIVESTOCK SLAUGHTER | | | | |
|-------------------------------------------------|---------|--------|-----------|--------|
| | CATTLE | CALVES | HOGS | SHEEP |
| Thursday 12/11/2014 (est) | 110,000 | 2,000 | 428,000 | 8,000 |
| Week Ago (est) | 110,000 | 2,000 | 427,000 | 8,000 |
| Year Ago (act) | 114,000 | 3,000 | 437,000 | 10,000 |
| Week to Date (est) | 446,000 | 8,000 | 1,716,000 | 34,000 |
| Same Pd Lt Week (est) | 438,000 | 8,000 | 1,716,000 | 33,000 |
| Same Pd Lt Yr (act) | 475,000 | 12,000 | 1,738,000 | 37,000 |

| Upcoming Events | |
|--------------------------------|---------------------------------|
| Fruit and Vegetable Conference | Jan.5-6, 2015 Lexington, Ky. |
| Ky. Farm Bureau Beef Expo | March 6-8, 2015 Louisville, Ky. |

| National Daily Direct Slaughter Cattle | |
|-----------------------------------------------|-----------------|
| Negotiated Purchases 12/11/2014 | |
| Live Bids- weighed average weights & prices | |
| Steers: | |
| 80%-up Choice | 1360 lbs 163.80 |
| Heifers: | |
| 80%-up Choice | 1279 lbs 163.93 |